
CENTENARY

1837



1937

CLAPHAM BROS., LTD.
KEIGHLEY.



A
Brief
Historical Survey
of the firm of
CLAPHAM BROS. LTD.,
KEIGHLEY, YORKSHIRE

Issued to Commemorate their
CENTENARY

July 17th 1937.



IN the year 1837 which saw the beginning of Queen Victoria's reign, John Clapham commenced business as an Iron Founder in Greengate, Keighley. Two years later he sold the business, and with his brother Thomas went to Canada, but after a short stay they returned to Keighley and together purchasing the old business took into partnership their brother William. The early growth of the firm was slow, until in 1850 they built Wellington Foundry, twenty years later they built an additional foundry in Lawkholme Lane and shortly afterwards additional premises were acquired in Market Street adjoining their first works.

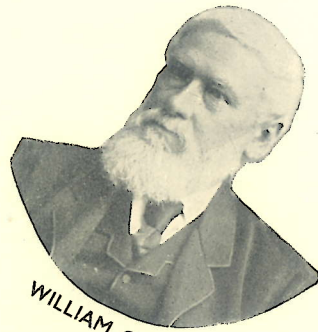
In 1893 after fifty six years without change in the original name of Clapham Bros., John Clapham retired from the business, and it was converted to a Limited Liability Company, the first directors being Thomas Clapham (Chairman 1893/1899) his son Samuel B. Clapham (Chairman 1906/1915), William Clapham (Chairman 1899/1906), and his son Thomas S. Clapham, the latter also acting as Secretary. On the deaths of Thomas and William their places on the board were taken by their respective sons, William S. Clapham and Walker Clapham.



JOHN CLAPHAM



THOMAS CLAPHAM

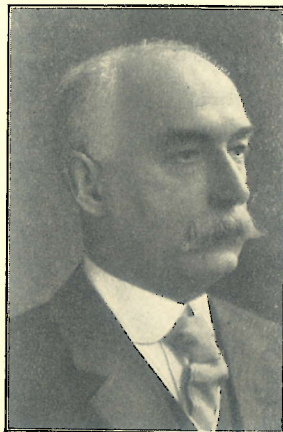


WILLIAM CLAPHAM

FOUNDERS
AND

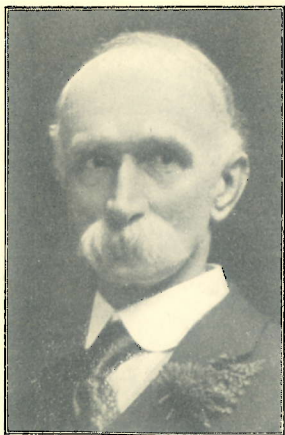


SAMUEL B. CLAPHAM



THOMAS S. CLAPHAM

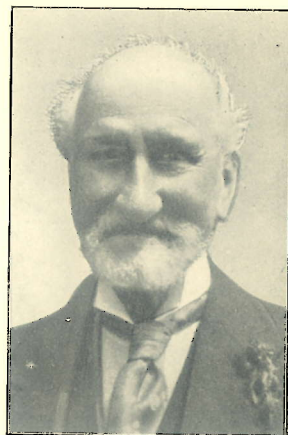
PAST
DIRECTORS.



WALKER CLAPHAM



WILLIAM S. CLAPHAM



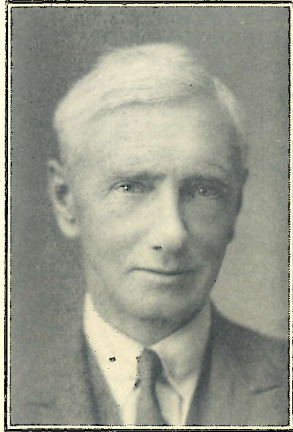
SAMUEL CLAPHAM

I N the year 1915 the firm had the misfortune to lose by death no less than three of its directors, Thos. S. Clapham at that time well-known in the Gas Industry as a past Chairman of the Society of British Gas Industries, Samuel B. Clapham and Walker Clapham.

T. Alborn Clapham the General Manager, Fredk. W. Clapham and Samuel Clapham, joined the board, William Sugden Clapham becoming Chairman, which position he filled until his death in 1936. Samuel Clapham died in 1926, and their places have since been taken by Harold Clapham and Samuel Clapham, sons of the former. Thus the present board, three being brothers, and all grandsons of the original founders, maintains an unbroken family connection over a period of 100 years.

Prior to 1840 the firm was chiefly engaged in the supply of castings locally, and old records show sales to B. & W. Marriner, J. & J. Craven, Thomas Horsfall, William Smith & Sons, and later to Brown, Darling & Company.

Thomas Clapham was responsible for developing the Gasworks Plant business, and although few particulars are now available, in the early fifties, Gas Mains, Purifiers and Retort House Ironwork were being made, and by 1878 large contracts for Gasworks Plant were in progress in different parts of the country.

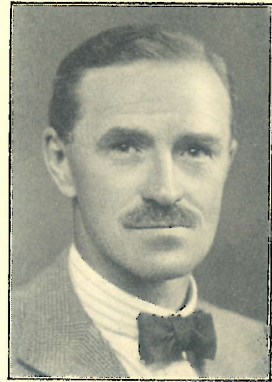


T. ALBORN CLAPHAM
M. Inst. Gas E.
Chairman & Managing Director.



F. W. CLAPHAM
Director.

PRESENT BOARD OF DIRECTORS.



HAROLD CLAPHAM
M. Inst. Gas E.
Director.



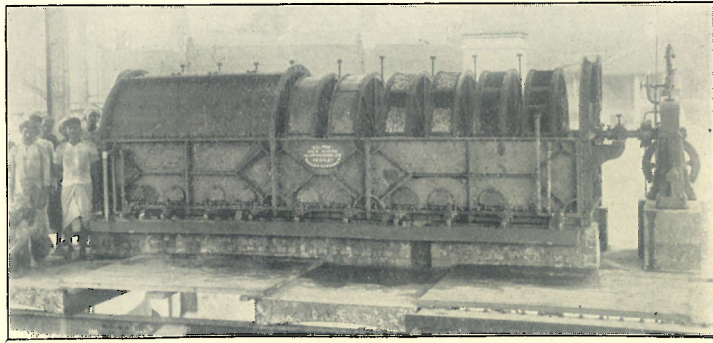
SAMUEL CLAPHAM
Director and Secretary.

THE progress of the firm at this period was considerable, and marked development in the design of Gasworks Plant took place, the firm providing its quota of innovations and improvements.

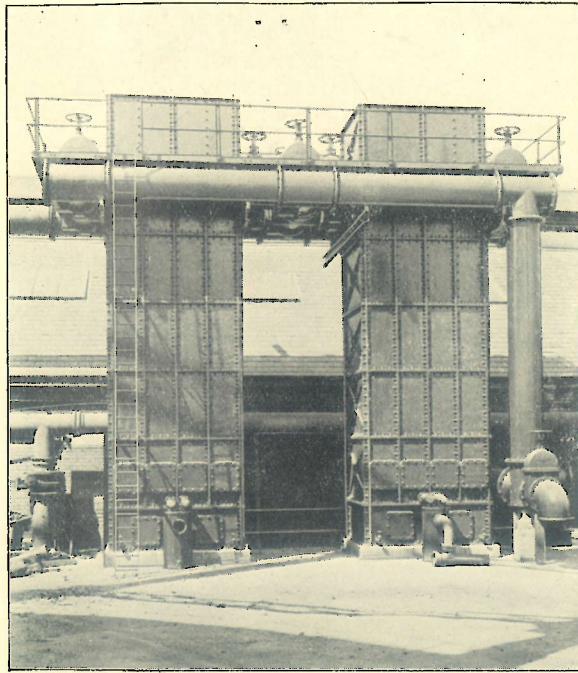
The year 1881 saw the appearance of the first Laycock & Clapham "Eclipse" patent Rotary Washer Scrubber. After the installation of the first few machines it rapidly attracted attention, and following its adoption by many undertakings at home, orders were received from countries in many parts of the world and eventually machines were in operation at some 250 Gasworks and Collieries. This machine with other of the firm's products at the International Inventions Exhibition in 1885 resulted in the award of a Silver Medal for a "Collective Gasworks Plant Exhibit," and it is noteworthy that this included the original Rack and Worm Gas Valve which has since been used extensively throughout the trade.

In 1884 the firm introduced their first Vertical Water Tube Condenser which was erected at Lincoln, and some years later the "Eclipse" patent Vertical Water-tube Condenser of which some 300 Sets were subsequently installed.

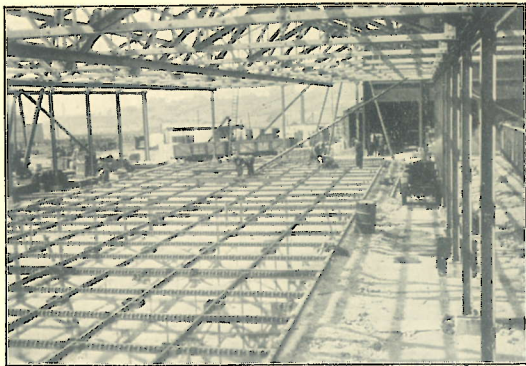
In 1887 no fewer than Forty-two Purifiers had been delivered to Bradford alone. This is particularly interesting in view of the fact that at the present time Four Purifiers 40ft. by 30ft. and Four Purifiers 30ft. square shown on the accompanying photograph in course of erection, are in progress at Bradford.



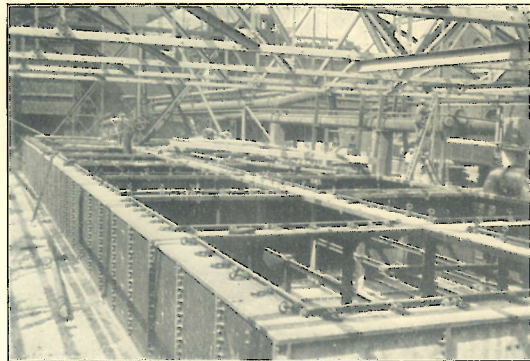
Laycock & Claphams "Eclipse" Ball Washer Scrubber Original Type.



"Eclipse" Vertical Tube Condenser Modern Type.
Maidstone 1936.



4 Purifiers 40 ft. by 30 ft.



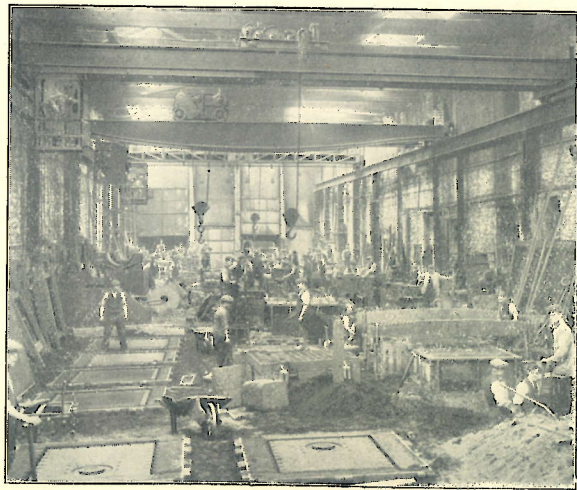
4 Purifiers 30 ft. by 30 ft.

PURIFIERS IN COURSE OF ERECTION BRADFORD 1937.

DURING these years three foundries were in operation, Wellington Foundry for Gasworks Apparatus, Nelson Foundry for the Manufacture of Vertically Cast Socket and Spigot Pipes, and Market Street Foundry for Light Castings.

All continued operations until 1912 when the Vertical Pipe Casting Plant at Nelson Foundry was dismantled, and the Works converted into a General Foundry for Gasworks Plant. This was enlarged in 1916 and again in 1922, Six Overhead Electric Travelling Cranes, New Furnaces and Subsidiary Plant being installed after which the older foundries were closed down.

At no time were the activities of the firm devoted solely to the Gas Trade. An interesting example of a specialty job which they undertook in 1886 was the design, manufacture, and erection of a Revolving Observatory Roof for the late Mr. E. Crossley of Bermersyde, Halifax. A photograph of this roof is here reproduced as an interesting example of the diversity of activities of the early members of the firm. This Observatory Roof was fitted with the usual sliding panel and rotating gear, and originally housed Mr. Crossley's 36 inch Reflector which was subsequently presented to the Lick Observatory, Mount Hamilton, California.



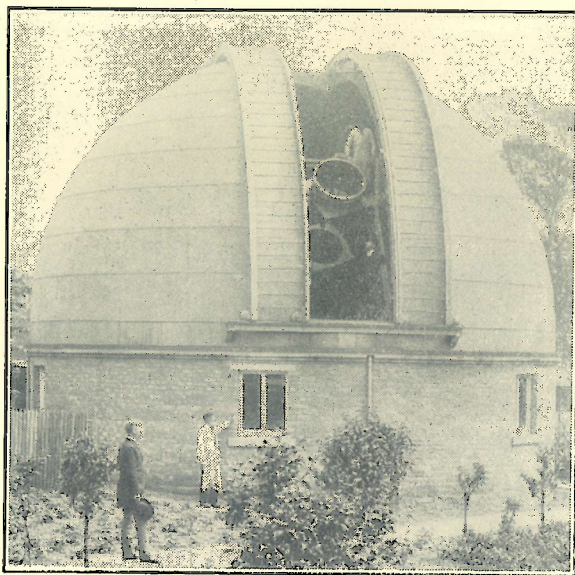
Portion of Present Foundry Lawkholme Lane, 1937.



Dressing Shop Lawkholme Lane 1937.



Section of Machine Shop Market Street 1937.



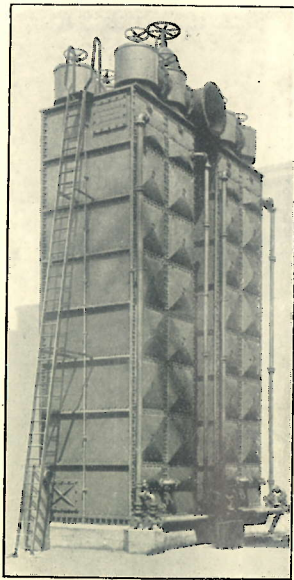
Revolving Observatory Roof which originally housed Mr. Crossley's 36 in. Reflector.

THE commencement of the present century saw the introduction of further Gas-works Specialities, Clapham's patent "Eclipse" Rubber Joint and Automatic Fastener for Purifier Covers were introduced in 1899, and although the patent rights have long since expired, the care and research expended in the manufacture of the special rubber used have enabled the firm to maintain a yearly sale three times as great as when the patent was in force.

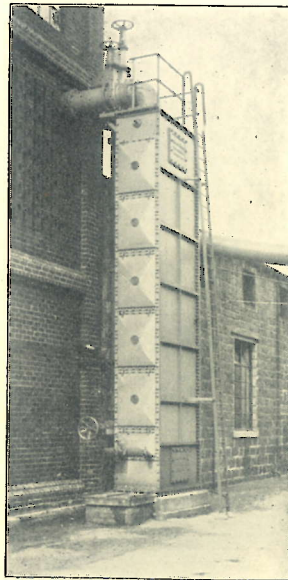
At the same time the patent "Reversible" Condensers and Pelouze and Andouin Tar Extractors were introduced, followed in 1912 by the patent "Triumph" Purifier Valve which are still manufactured in improved forms.

Gas Condensers of the Horizontal Tube High Efficiency Type were designed by the firm in 1908 and erected at Antwerp, additional ones being supplied to the same place and completed in 1914, a few days before the outbreak of war. Incidentally from this Condenser the firm's present well known High Efficiency Condenser was evolved, and photographs of the present type are here reproduced.

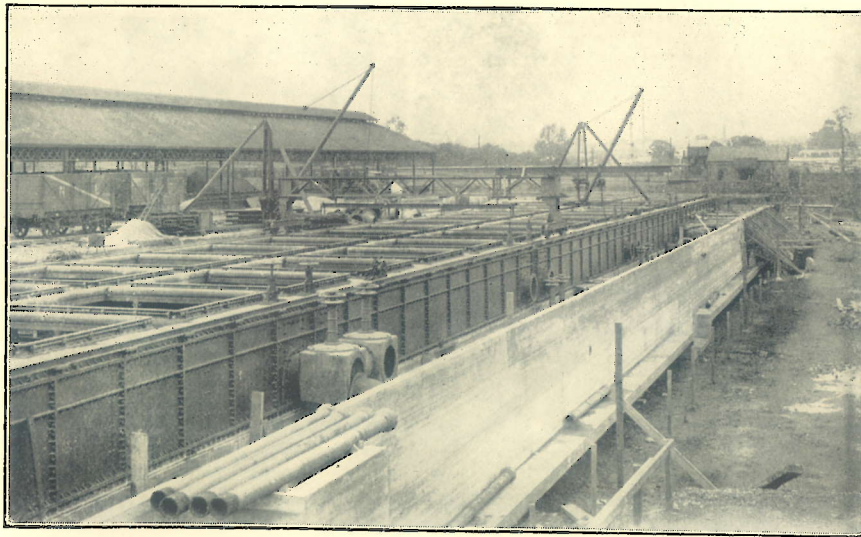
In the early days of the war the works, like those of many other firms, became a Controlled Establishment, and from then until the Armistice were largely engaged on work for Ministry of Munitions, and the Admiralty.



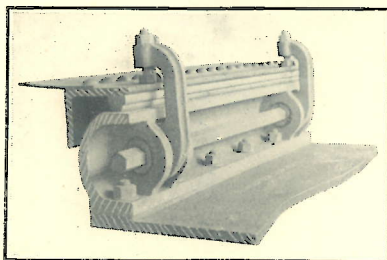
High Efficiency Horizontal Tube Condenser.
London 1933.



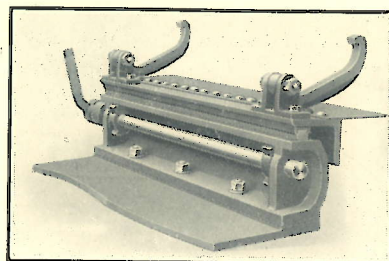
High Efficiency Horizontal Tube Condenser.
Yeadon 1934.



Five Purifiers, each 50 ft. by 30 ft. by 6 ft. deep with Clapham patent "Triumph" Valves, Automatic Fasteners, and "Eclipse" Rubber Joint, supplied to Coventry Corporation Gas Department.



Patent "Eclipse" Rubber Joint and Original R.A. Fastener.

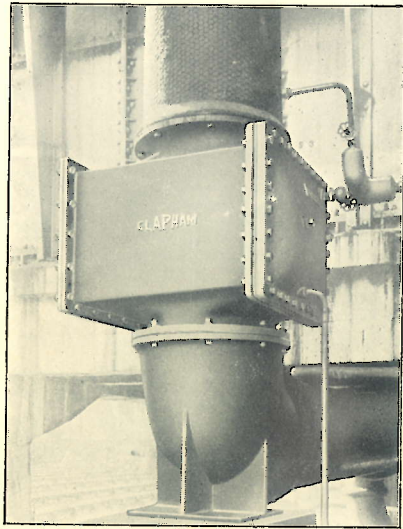


Latest Type Patent "Triumph" Fastener.

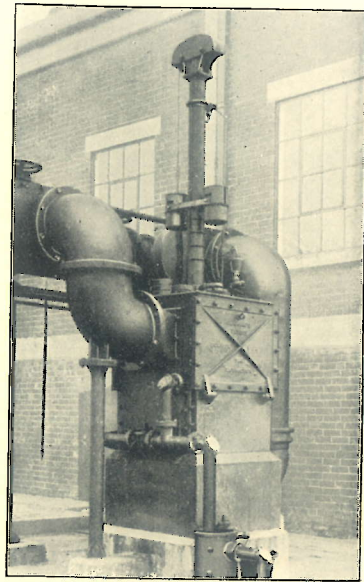
THIS year saw also another extension of activities, an interest being acquired in Keighley Laboratories, Ltd., a Firm of Consulting Metallurgists with a more than local reputation for improvements in Foundry Practice. Mr. T. A. Clapham was elected Chairman of the Board in 1923, and the Laboratories have since exercised Metallurgical Control over the Company's Products.

In more recent years, the Works and Plants have been extended and modernised, and among New Products may be mentioned the "Triumph" Valve, Horizontal Static Washer, and "Triumph" Pre-Heater for Purifiers. A notable example of the latter, installed by the Birmingham Corporation, has a capacity of 20-million cubic feet per day, and is probably the largest Single Unit of its kind at work.

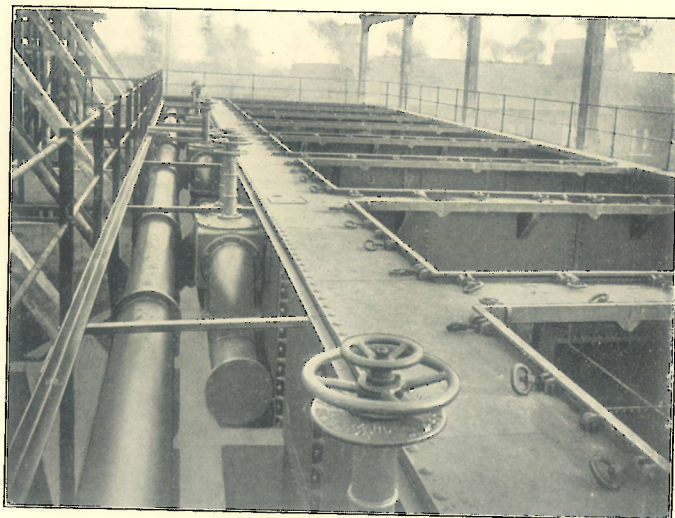
Appreciating the importance of modern methods, Electric Welding was introduced into the Works in 1928 and has since been steadily extended, the Welding Department being equipped with the Latest Types of Plant for Steel and Cast Iron Welding, and in addition, Portable Plants are available for work away from the Works. This Department handles a considerable amount of Repair Work on Steam Boilers, Diesel Marine Engines, Quarry and Gas Works Plant, in addition to the Fabrication of Steel Work.



"TRIUMPH" Pre-Heater for Purifiers.



"ECLIPSE" P. & A. Tar Extractor.



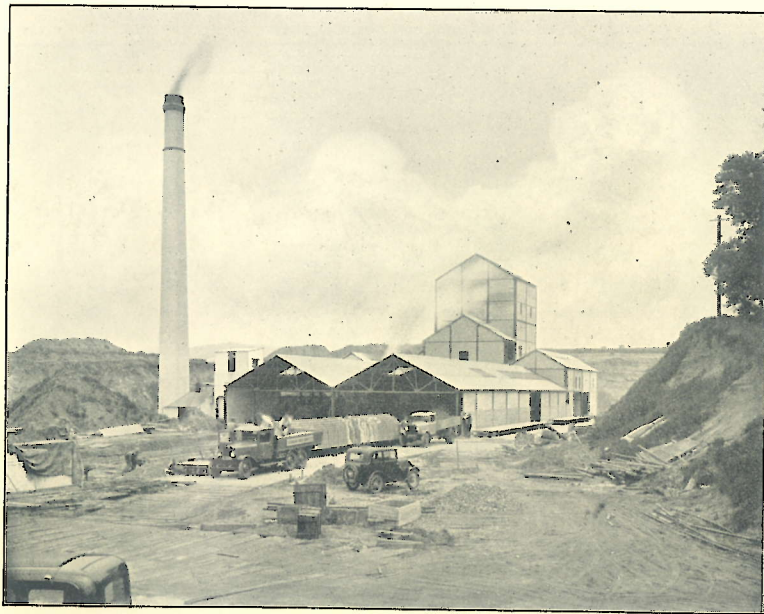
Application of Triumph Valves to 4 Purifiers.

DURING the period 1927-35, the Gas Trade, like many others, suffered what was probably one of the worst slumps in its history. This resulted in an effort being made to find alternative outlets. The firm having had 25 years experience as Sub-Contractors in the manufacture of Brick-making and Hydraulic Machinery, in 1932 took over the business of Messrs. N. S. Kilner & Co. (Engineers) Ltd., Leeds, who specialised in this class of work, and commenced the production of Brickmaking Plant, Grinding and Crushing Machinery, Elevating and Conveying Plant. Progress was made in this direction and is evidenced by the fact that several New Works have since been completely equipped, capable in the aggregate of producing over 100-million bricks per annum.

The firm's "Victory" Rotary Table Presses for the manufacture of Sand-Lime Bricks are made in sizes capable of producing 1000 to 2500 Bricks per hour, and are already well known throughout the Industry.

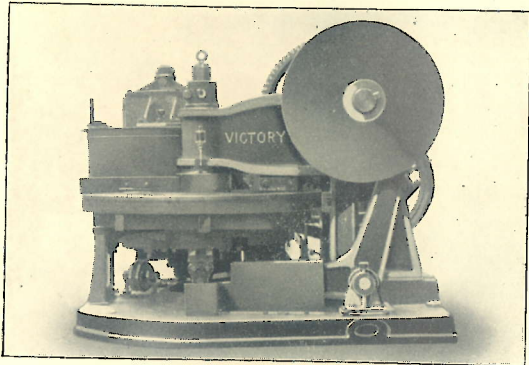
Pioneers in this Country of the "Hot System" for the manufacture of these Bricks, they were also the first to equip a works with a Rod Mill in place of the usual Grinding Mill. Several works have since been erected on these lines, all of which are in successful operation.

Other specialities of this department includes Hydraulic Presses, Pumps, Accumulators, Valves, etc.

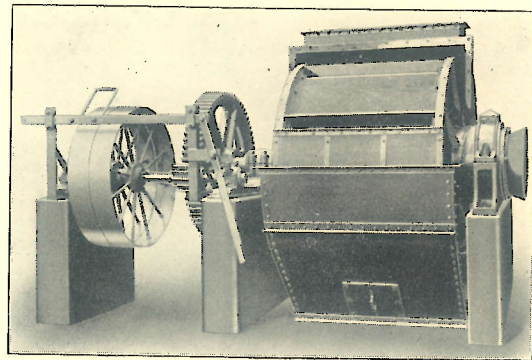


Sand-Lime Brickworks

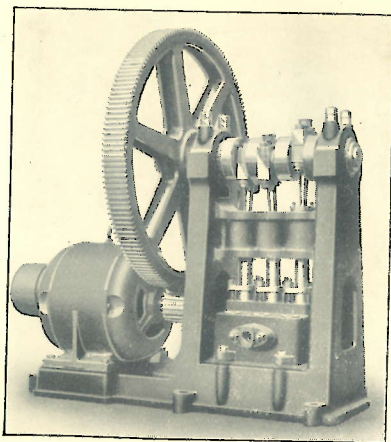
Erected 1934.



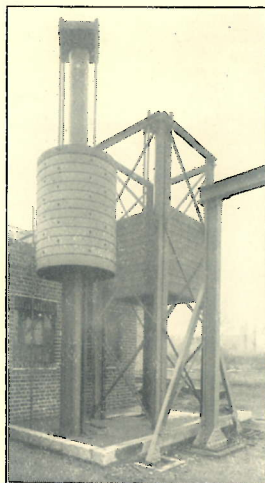
Victory Brickmaking Press.



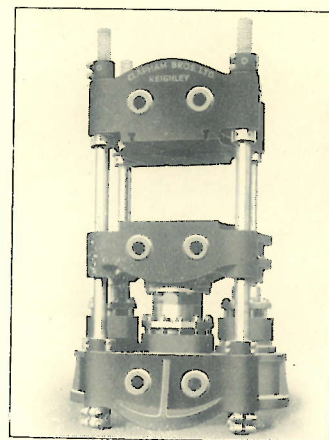
Ball Grinding Mill.



Hydraulic Pump.



Hydraulic Accumulator.



600 Ton Forging Press.

THE year 1931 marked still another milestone in the progress of Clapham Bros., Ltd., for it was in that year that the Company embarked upon the ambitious venture of Precision-Production Grinding Machine Manufacture.

A Machine Tool Factory situated in the beautiful countryside between Keighley and Skipton had carried on business since the days of the water wheel and the rise of the Lancashire and Yorkshire Textile Trade. The full control of this Factory was acquired as from February 1st, 1932, and the business carried on under the old name of John Lund, Ltd. The Directors, Mr. T. A. Clapham (Managing Director) and Mr. S. Clapham constitute the Board of John Lund, Ltd.

Mr. Joseph D. Scaife was appointed General Manager, and his wide knowledge of the Grinding Machine Market formed the basis for a period of great endeavour.

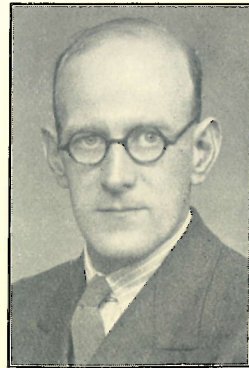
Months of careful designing and experiment evolved a range of Grinding Machines of the very highest class, which have met successfully the demand for PRECISE work and MAXIMUM production. To-day, Precimax Grinding Machines are known and respected wherever Mass Production Grinding is carried on. In the Home Market, Precimax Machines are known as the highest class of those types of machines which hitherto were only obtainable from U.S.A. or the Continent.



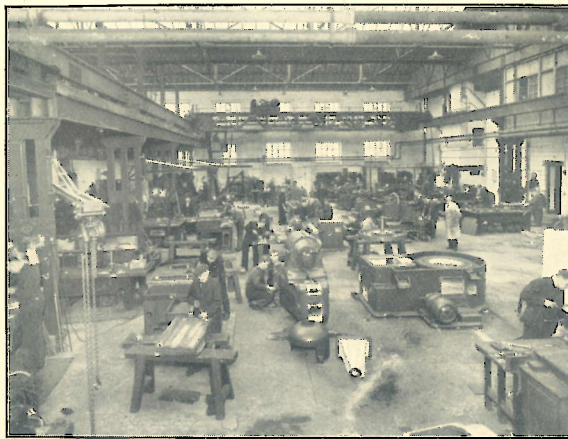
J. H. SMITH,
Secretary - John Lund, Ltd.



J. D. SCAIFE, M.I.Mech.E.,
General Manager-John Lund Ltd.



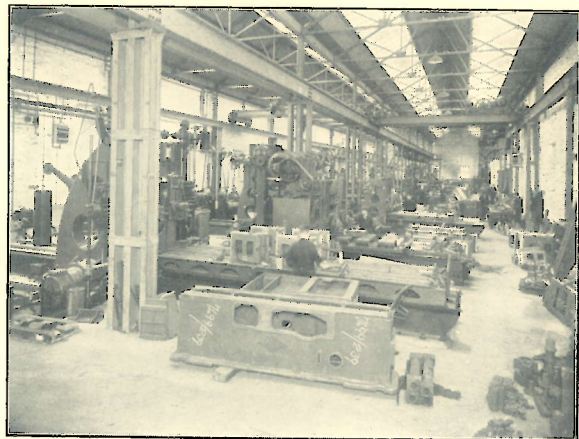
J. E. HILL,
Assistant General Manager,
John Lund, Ltd.



FITTING & ERECTING SHOP, John Lund, Ltd.



MACHINE SHOPS,

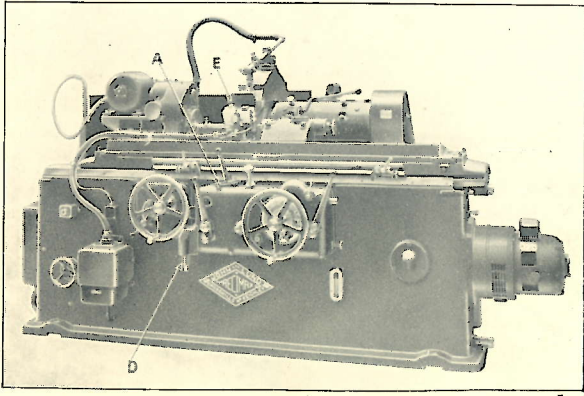


JOHN LUND, LTD.

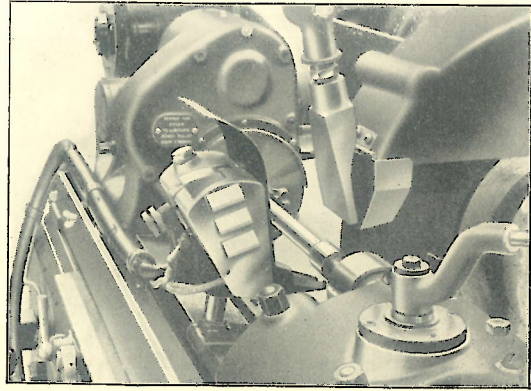
IN November, 1934, the reputation of John Lund, Ltd., was enhanced immeasurably by The Machine Tool Exhibition at Olympia. Here the Precizer, the first of the Company's Patent Sizing Devices was shown. The reception of the device was amazing, and improvements since made have ensured that by the use of Automatic Machines for Mass Production, the highly important final process of Grinding can be reduced to semi-skilled work.

In 1935 the first Extension of Plant was effected, and in 1936 the demand for machines made a doubling of works capacity necessary. By building Extensions, and the installation of New Plant, this was completed by the end of 1936.

The demand for the Firm's Products is still increasing, and at the present time, further Extensions of Buildings and Plant equal to the previous year's increase are in hand, and will very shortly be in full operation.



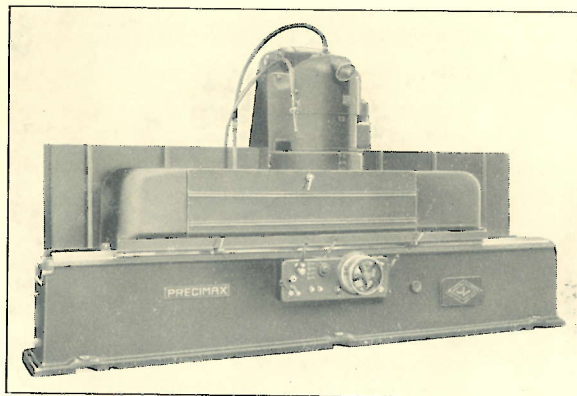
Precimax Cylindrical Grinding Machine Fitted with "Precizer"
Automatic Size Controller.



'Precizer' Size Controller in working position.



Test Bar ground on Precimax Cylindrical Grinding Machine
Ovality within 0.00001, parallelism within 0.00005,
mirror finish.



Surface Grinding Machine Type S.V. 18/60.

THE diversity of the combined activities of Clapham Bros., Ltd. and John Lund Ltd., embracing as they do, General Engineering and Contracting, Gas Engineering, Brick-making and Crushing Machinery, Hydraulic Machinery, and Precision Grinding Machinery, gives the Directors confidence in the future, and inspires the hope that the Firm will in years to come, help to maintain the tradition of Local Engineering Enterprise which Keighley has enjoyed for so many years.

This brief historical survey would be incomplete without reference to the many faithful servants who have in the past helped in the development of the business—many who have records of service from 30 to 50 years, and the Directors take this opportunity of expressing their appreciation of the services of all those employees, both past and present, who have, in whatever capacity, served the interests of the Firm.



- | | |
|--------------------------------------|--|
| (1). J. C. BARWICK, A. Inst. Gas E., | Chief Draughtsman. |
| (2). N. S. KILNER, A.M.I. Mech. E., | Manager, Brick Machinery & Hydraulic Dept. |
| (3). F. STOWELL, | Machine Shop Foreman. |
| (4). F. GREENWOOD, | Chief Clerk. |
| (5). A. B. AUTY, A. Inst. Gas E., | Assistant to Managing Director. |
| (6). D. P. LISTER, | Order and Transport Dept. |
| (7). J. RHODES, M.I.W.E. | Welding Dept. Foreman. |
| (8). R. MOFFITT, | Foundry Foreman. |
| (9). Ed. WALMSLEY. | Pattern Shop Foreman. |

CHIEF MEMBERS OF STAFF. CLAPHAM BROS. LTD.,
1937.